

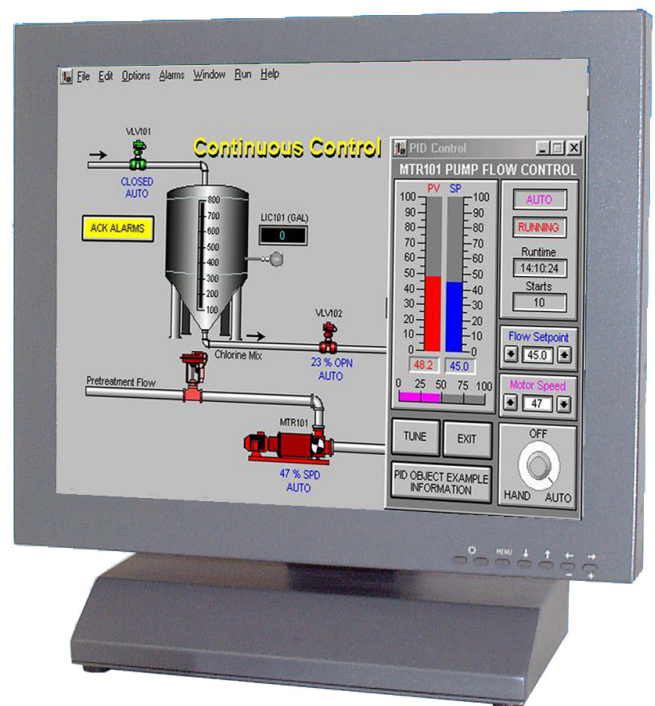
## HIGH QUALITY DESKTOP DISPLAYS

KME has developed this 21.3" Desktop model, within the popular 19LM series of LCD monitors, to address the growing demand for a monitor that is capable of displaying PAL/NTSC video and VGA to UXGA resolution data signals. The 19LM211A31MPY series has this capability. Two separate signal sources (e.g. Camera/VCR + Computer RGB) can be connected simultaneously and automatically switched to full screen, on a Priority basis. Alternatively the video images may be presented as a "Picture in Picture" over a data image. This selection is set-up by the sophisticated OSD controls that also validate the picture zoom, roll, and freeze frame features. Remote access to the OSD controls is also available via the RS232 serial port.

The combination of a highly flexible PAL/NTSC video interface and a VGA to UXGA data display makes this monitor the perfect choice for process control system integrators.

### SOLUTIONS FOR DESKTOP MONITORS

- > **A No Frills Industrial Design Concept**  
A heavy - duty tiltable desktop stand with automatic image size adjustment
- > **Touch screen capability**  
A touch screen can be easily integrated into the display
- > **Inputs**  
All monitors have RCA, 15-D and DVI-D connectors
- > **Rugged metal construction with good stability**  
The LCD monitor has been designed with solidity, being housed in a compact metal construction with a toughened glass protection screen.



# 21.3" DESKTOP LCD MONITOR

19LM211A31MPY

# DATASHEET

Electrical Description		Mechanical Description	
<b>TFT Characteristics:</b>	Type:	a-Si TFT active matrix	<b>Dimensions:</b> Monitor: 483 x 478 x 187mm
	Max Resolution:	1600 x 1200 pixels	Weight: 11kg approx
Active Display Area:	432 x 324 mm	<b>Input:</b>	DVI-D, 15-D, RCA
Response Time:	26ms average, typical	<b>Housing</b>	Painted aluminium
Contrast Ratio:	800:1 typical	<b>User Controls:</b>	Rear Mounted
Brightness:	300cd/m <sup>2</sup> typical	<b>On Screen buttons</b>	Auto set-up, OSD
Viewing Angles (at CR>10):	178° H, 178° V		
Backlight Life:	50,000 hours typical		
No. Colours:	16.7M		
<b>Video Signal:</b>	Analog 0.7-1.0Vp-p PAL / NTSC		
<b>Signal Sync:</b>	Separate H&V (+/-ve) TTL Composite (CVBS) 1V p-p		
<b>Synchronisation Range:</b>			
Horizontal scan:	15kHz (PAL / NTSC) 30kHz - 80kHz		
Vertical scan:	50 to 70Hz		
<b>Power Supply:</b>	90 - 260V AC 50/60Hz Power Pack inside base		
<b>Power Consumption:</b>	85W (Max)		
<b>Environmental:</b>			
Storage Temp:	-20 to 65°C		<b>Part Numbers:</b>
Operating Temp:	0 to 50°C		Desktop Model: 19LM211A31MPY
			Display Head only: 29LM211A31MPY
			AC Power Pack: 20BK0220
			With Resistive Touch: 19LM211AR31MPY
			With Capacitive Touch: 19LM211AC31MPY

Due to a policy of continuous product development KME reserves the right to change specifications and descriptions without prior notification. All trademarks acknowledged.

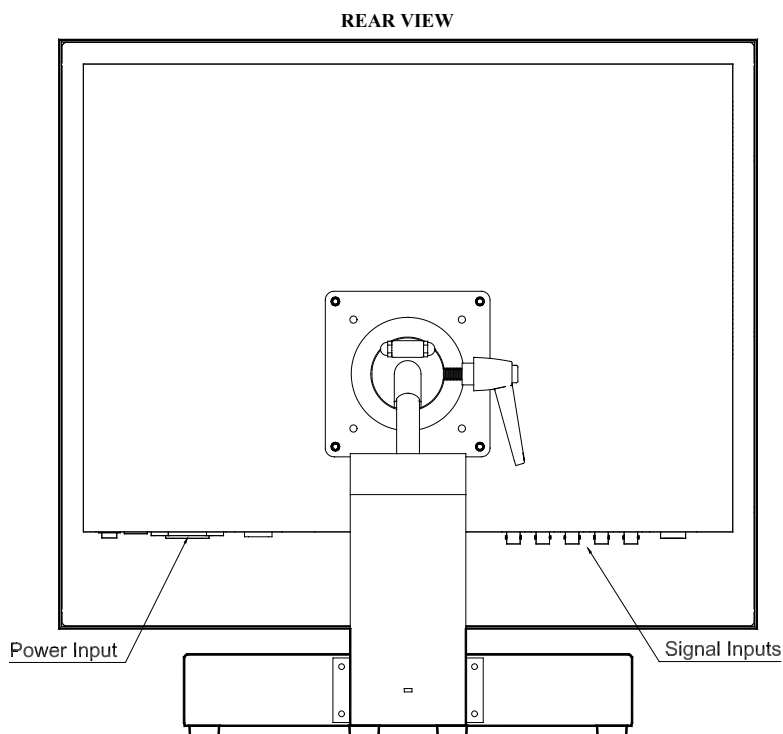
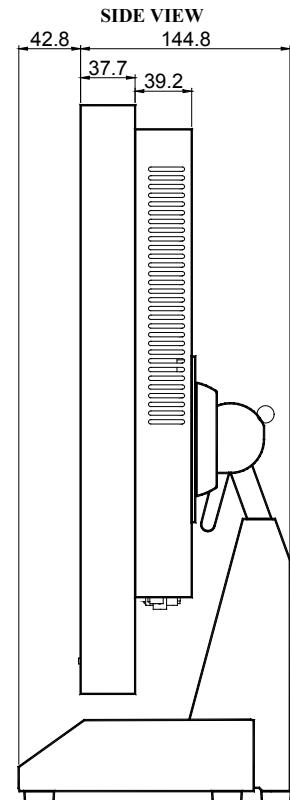
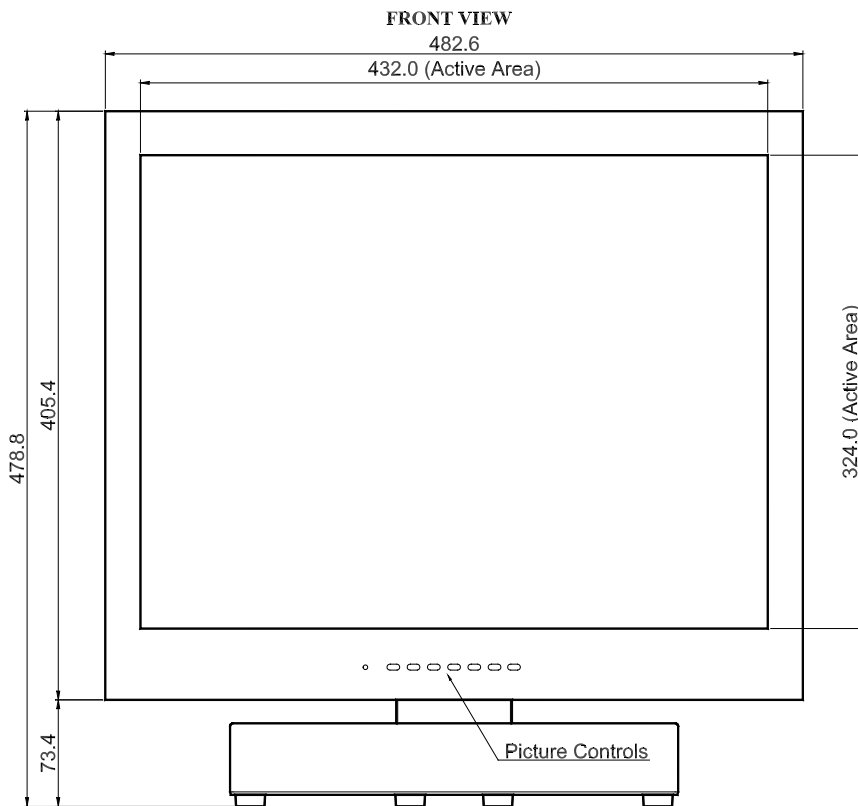
**KENT MODULAR ELECTRONICS LTD**  
 621 Maidstone Road  
 Rochester, Kent ME1 3QJ  
 T: +44 (0)1634 830123 F: +44 (0)1634 830619  
 E: sales@kme.co.uk W: www.kme.co.uk



# 21.3" DESKTOP LCD MONITOR

19LM211A31MPY

# DATASHEET



All dimensions in millimetres  
(Not to scale)

KENT MODULAR ELECTRONICS LTD  
621 Maidstone Road  
Rochester, Kent ME1 3QJ  
T: +44 (0)1634 830123 F: +44 (0)1634 830619  
E: sales@kme.co.uk W: www.kme.co.uk

