

# 12.1" CRT REPLACEMENT LCD MONITOR HEAD

29LM123E71UN/1

# DATASHEET

## SLOW SCAN LCD MONITORS

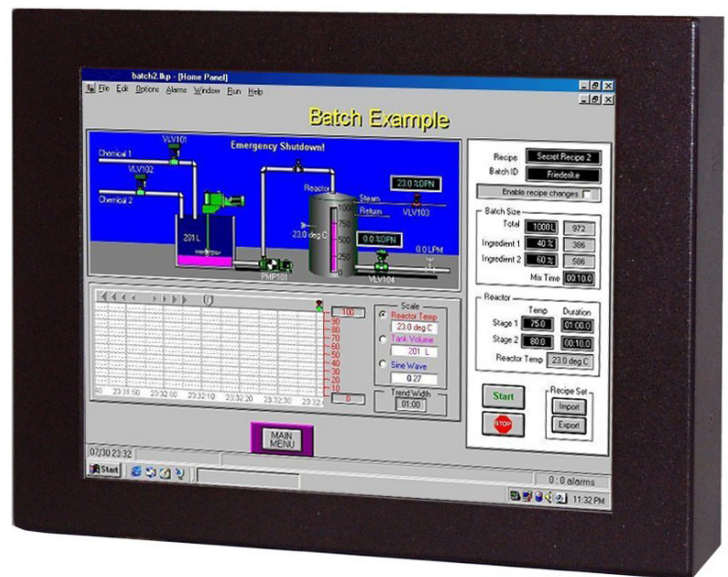
The 29LM123E71UN/1 series of Industrial LCD monitors have been designed as replacements for 12" CRT monitors now that supplies of 12" CRTs are difficult to obtain. Ease of integration into a wide range of Measurement, Instrumentation and Human-Machine interface applications has been a key consideration.

KME has designed a rugged LCD monitor module, of minimum width, to match the dimensions of its 12" CRT monitor chassis. The monitor is housed in a rugged metal case with rear fixing points. The LCD module is ventilated for best reliability when mounted within the OEM enclosure. EMC considerations include the use of a metal shield over the front of the LCD panel. Toughened, non-glare safety glass protects the LCD.

The A/D board has been designed to accept a wide range of signal timings from 15kHz up to SVGA standard, including CGA & EGA legacy signals. Set-up controls for fine-tuning of the display are located at the rear of the monitor. Once set, no further adjustments should be required, and the last setting is stored in memory.

### SOLUTIONS FOR DESKTOP MONITORS

- > CGA/EGA/VGA/SVGA compatible
- > Analogue Video inputs via BNC/15HD
- > TTL Inputs via 9D- 15D Accessory Cable
- > Programmable for non-standard Legacy signals
- > Rear OSD Controls for maximum versatility
- > Optional Touchscreen Integration



# 12.1" CRT REPLACEMENT LCD

# DATASHEET

## MONITOR HEAD

29LM123E71UN/1

Electrical Description		Mechanical Description	
<b>TFT Characteristics:</b>	Type:	AM Colour TFT	<b>Dimensions:</b> Monitor (approx): 294 x 238 x 55mm Weight: 3.5kg (approx)
	Max Resolution:	800 x 600 pixels	<b>Input:</b> 5 x BNC 75R 15-pin HD Female
Active Display Area:	246 x 184.5 mm	<b>Housing</b>	Painted aluminium
No. Colours:	256k	<b>User Controls:</b>	Rear Mounted
Contrast Ratio:	500:1 typical	<b>On Screen buttons</b>	Brightness, Contrast, H/V Position & Size, Frequency, Frequency Fine, Colour
Brightness:	400cd/m <sup>2</sup> typical		
Viewing Angles (at CR>10):	140° H, 110° V		
Backlight Life:	50,000 hours typical		
Clock Rate:	80MHz max		
<b>Sync. Type/Level:</b>	Separate H&V (+/-ve) TTL or Composite (-ve) TTL or Sync-on-Green (-ve) 0.3V		
<b>Signal Sync:</b>	Analog RGB 0.7-1.0Vp-p OR TTL RGB>2.75Vp-p (via special TTL accessory cable)		
<b>Synchronisation Range:</b>	Horizontal scan:	15-60kHz	
	Vertical scan:	40-100Hz	
<b>Multiscan Support:</b>	800 x 600 SVGA 640 x 480 VGA 640 x 400 640 x 350 & other pre-programmed timings in 15-30kHz range		
<b>Power Supply:</b>	12V DC		
<b>Power Consumption:</b>	30W Max		<b>Part Numbers:</b>
<b>Environmental:</b>	Storage Temp:	-20 to 70°C	Desktop Model: 29LM123E71UN/1
	Operating Temp:	0 to 55°C	

Due to a policy of continuous product development KME reserves the right to change specifications and descriptions without prior notification. All trademarks acknowledged.

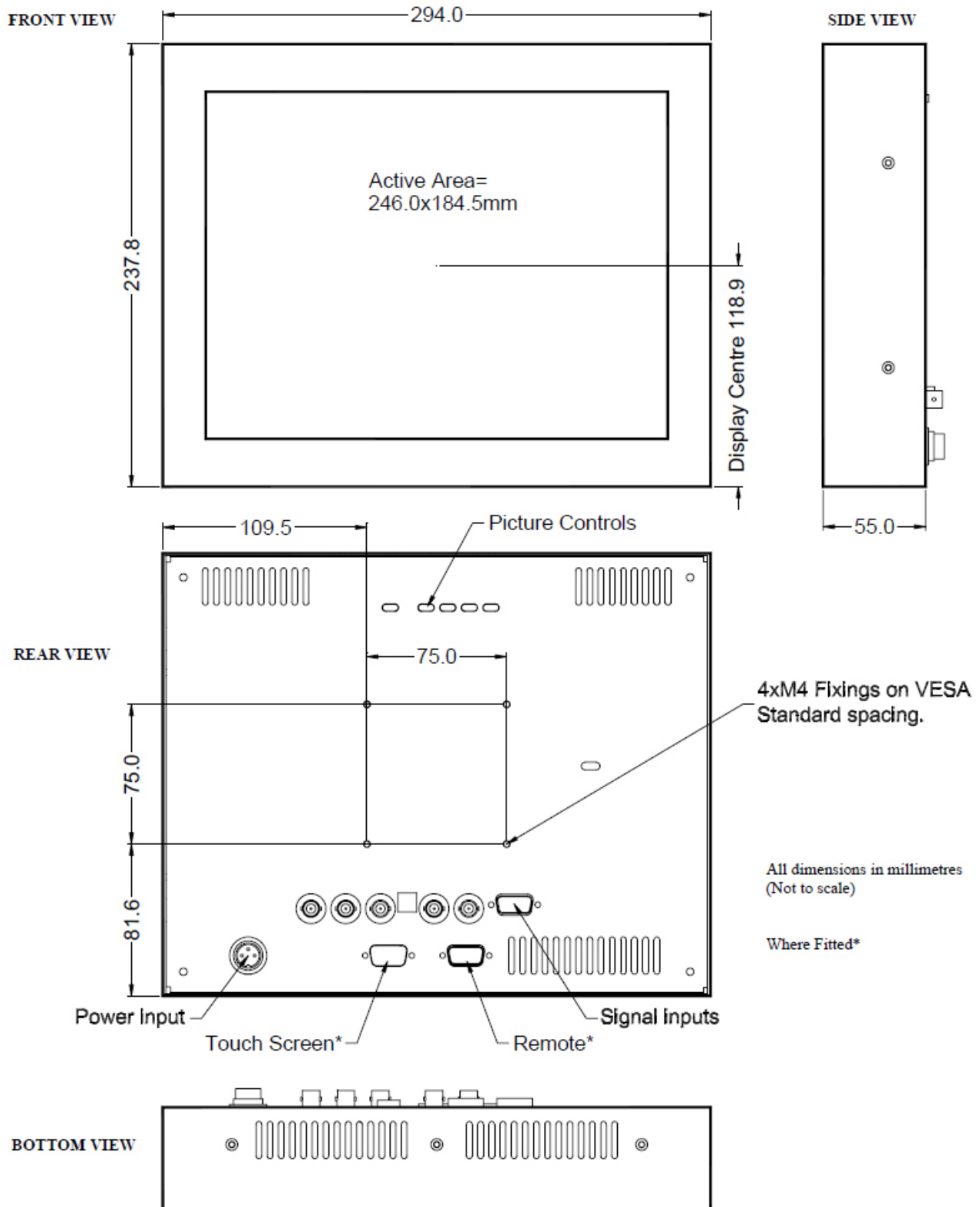
KENT MODULAR ELECTRONICS LTD  
621 Maidstone Road  
Rochester, Kent ME1 3QJ  
T: +44 (0)1634 830123 F: +44 (0)1634 830619  
E: sales@kme.co.uk W: www.kme.co.uk



# 12.1" CRT REPLACEMENT LCD MONITOR HEAD

# DATASHEET

29LM123E71UN/1



KENT MODULAR ELECTRONICS LTD  
621 Maidstone Road  
Rochester, Kent ME1 3QJ  
T: +44 (0)1634 830123 F: +44 (0)1634 830619  
E: sales@kme.co.uk W: www.kme.co.uk

